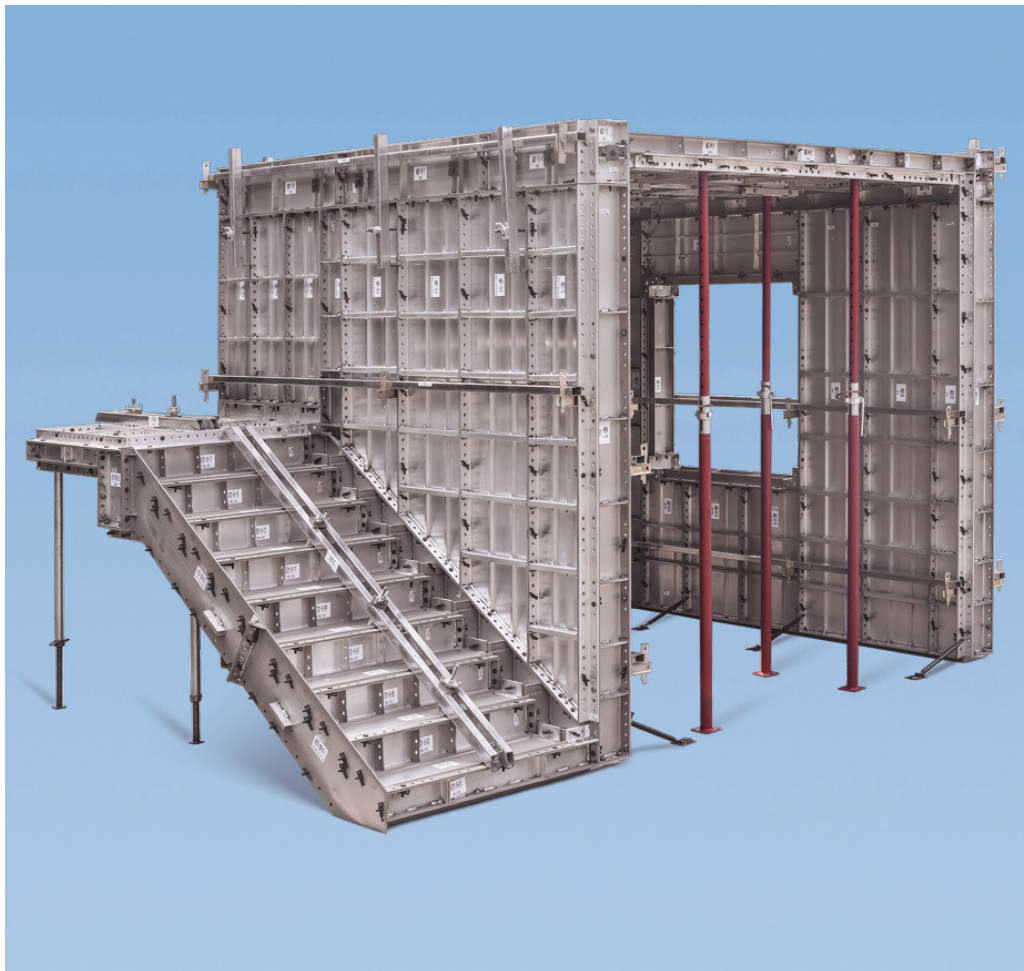


PERI Monolithic Solution for Residential Construction

Robust, lightweight and durable for maximum performance

Product Brochure – Issue 10/2024



PERI Monolithic Solution for Residential Construction

Revolutionizing Construction with the Single Cast Method

PERI Monolithic, produced by SNTO, is a state-of-the-art aluminium formwork system designed to optimize efficiency, precision, and safety. With its innovative panel design and flat tie system, it redefines speed and simplicity in construction, setting a new benchmark for modern building solutions.

PERI Monolithic consistently delivers superior performance with high efficiency. The system enables the simultaneous construction of walls, columns, slabs, beams, and stairways, accelerating project timelines and reducing costs. Its versatile formwork elements adapt to diverse project needs, ensuring precision and convenience.

The lightweight aluminium components make assembly faster and easier by eliminating the need for cranes. The innovative snap tie system eliminates covering accessories and grouting activities, streamlining workflows and saving time. After a brief orientation, even inexperienced users can easily and quickly work with the PERI Monolithic system.



Innovative Aluminium Formwork

For Faster, Safer, and More Efficient Construction



Durable Powder-Coated Surface

The powder coated panels offer excellent resistance to concrete reaction and scratches ensuring durability and enables easy deshuttering.



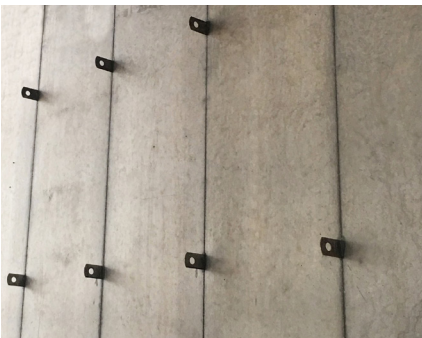
Robust and Lightweight Panels

Single extruded panels made from high-strength 6061 grade aluminium with vertical ribs enhance robustness while remaining lightweight.



Fewer ties

Efficiently designed panels require only 6 tie levels to handle 60 kN/m² concrete pressure up to a height of 3.3 m.



Flat snap ties for fast, efficient assembly

Flat snap ties enable quick and efficient assembly, simplifying the construction process. After concreting, they can be easily broken 6 mm from the concrete surface, eliminating the need for grouting and curing.



Maximum use of standard panels

Most wall panels are standard, ensuring consistency across projects, with only the corner walls being non-standard, making PERI Monolithic an ideal solution for easy jobsite handling.



Faster delivery

Self-developed aluminium formwork automatic production lines have a capacity of producing 20,000 m² per day, enabling standardized and high-speed manufacturing that ensures fast delivery to job sites.

Efficient working procedures

Lightweight elements and easy installation reduces dependency on skilled labours



The lightweight elements make forming with the system very efficient. In addition, a minimum of individual components ensure fast working operations.

The smart color coding system uses intuitive stickers for easy component identification, facilitating hassle-free execution on the job site. This system reduces errors and saves time, enabling teams to work more efficiently and accurately.

All connections are engineered to ensure tightly sealed element joints. The tightly sealed joints connections prevent any leakage of the fluid concrete, ensuring flawless concrete surfaces and superior finish quality.



Advantages of Using PERI Monolithic Formwork

Maximizing Efficiency and Sustainability in Modern Construction



Lightweight
and Efficient

With an average weight of 19-21 kg/m², PERI monolithic is light enough to be handled manually, making the system crane free.



Faster
Construction
Cycles

With PERI monolithic formwork, typical cycle time can be significantly reduced ensuring rapid project completion.



Easy to use

The system is designed for quick assembly with minimal training. No specialized tools or skilled labor are required.



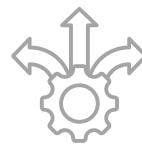
Cost-Efficient

Better economy through using maximum number of standard panels which may be used for multiple projects



Recyclable

PERI Monolithic formwork uses fully recyclable aluminium, ensuring sustainability while providing significant salvage value for cost recovery at the end of its use.



Design Flexibility

Our expert design team creates versatile solutions for a wide range of building types. The precision of our formwork reduces the need for expensive post-construction adjustments.



Superior
Finish Quality

PERI Monolithic formwork features powder-coated panels that deliver a smooth, high-quality finish, reducing the need for extensive post-construction work like heavy plastering.



Smart
Intelligent
mockup

Achieving error-free site execution with factory-based intelligent digital mockups



Reduced
Waste and
Emission

The reusable nature of the system helps minimize construction site waste, supporting clean, organized, and eco-friendly work environments.



Smart color
coding

The smart color coding system simplifies component identification with intuitive stickers, making on-site work easier and more efficient.



Fewer ties

The panels are designed with efficiency in mind, requiring only 6 tie levels to withstand concrete pressure of up to 60 kN/m² at a height of 3.3 meters.



Fully Extruded
Panels

No need of longitudinal welding to connect two separate pieces as panels are fully extruded. This avoids quality issues at the center part of the panels



PERI Kuwait W.L.L.
Formwork Scaffolding Engineering
PO Box 23910, Office B1,
MAZAYA Tower 2 - 26th Floor,
Khalid Ibn Al Waleed St,
Kuwait City,
Kuwait
Email: info@perikuwait.com
Phone: +965 9696 3619