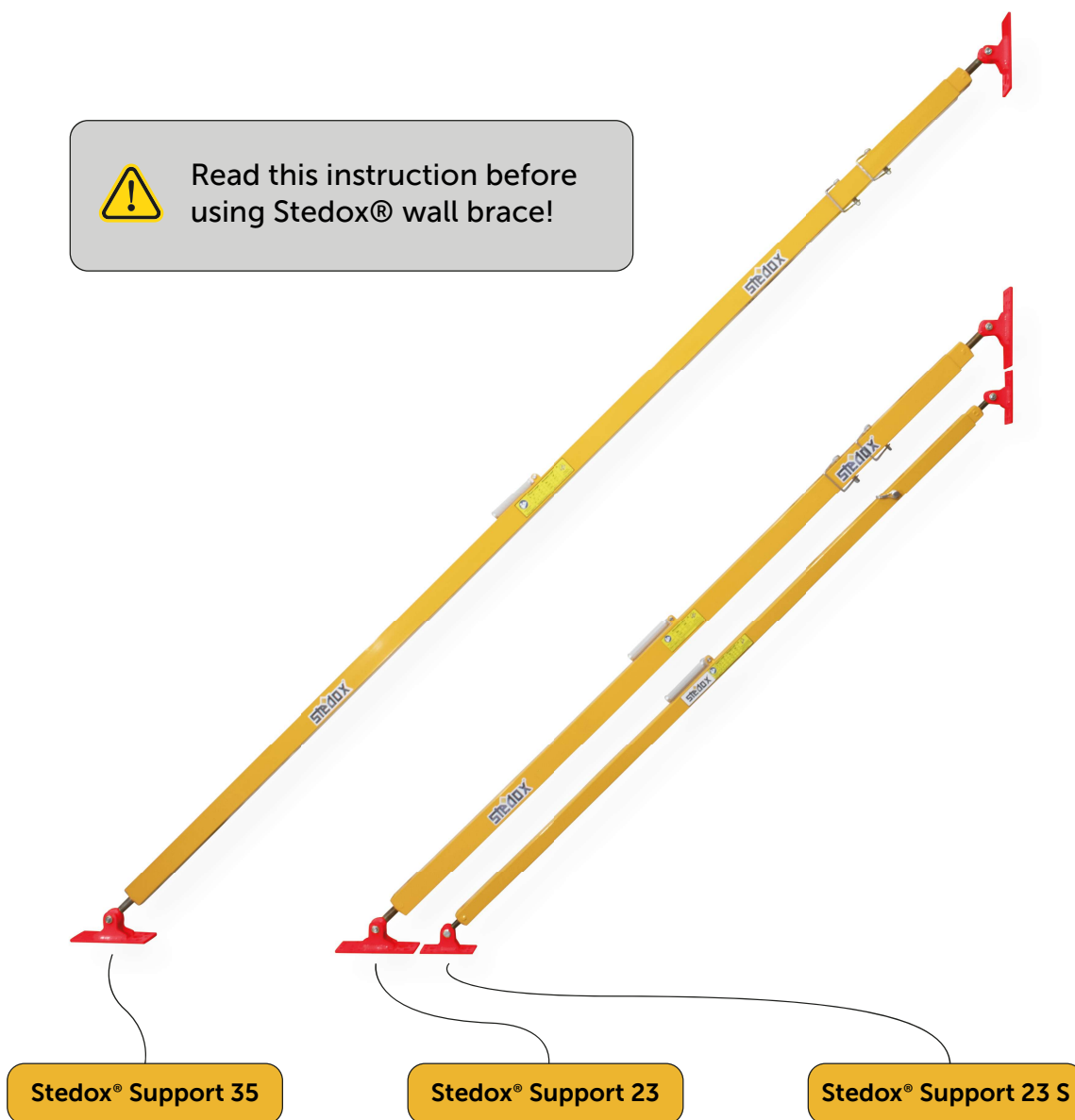




Read this instruction before using Stedox<sup>®</sup> wall brace!



# Table of contents

Stedox® Support Operating Instructions	1
1. Stedox®	3
2. About the product	3
3. General	4
4. Safety and operating instructions	4
4.1 Symbols	4
4.2 Risk assessment	4
4.3 Installation instructions	4
4.4 Use	5
4.5 Information on the construction site	5
4.6 Illustrations	5
4.7 Checking the wall brace	5
4.8 Use of other products	5
5. Technical specification	6
5.1 Stedox® Support overview	6
5.2 End bracket geometry	7
6. Structural values	8
6.1 Load tables and charts	8
6.2 Example: Load and Force Calculation — Stedox® Support 35 at 5 meters	9
7. Note	10
8. Service and spare parts	10
9. Handling	10
10. Storage	10
11. In case of an accident	10
4 Reasons to choose Stedox®	11
<b>Stedox® and PERI contact information</b>	<b>11</b>

# 1. Stedox®

Stedox® is a brand owned by the Finnish company Stedox Ab Oy, Stedox® develops, manufactures and sells products for safe and easy installation work. Stedox® Support (hereinafter "Wall brace") is used to erect and install prefabricated elements, panels and columns,

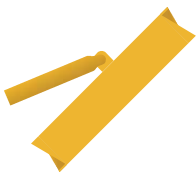
## 2. About the product

Stedox® Support is a wall brace specifically designed for timber structures. Noticing the lack of safe, durable, and user-friendly options on the market, the founders of Stedox® set out to develop a lightweight and robust wall brace from the ground up. Today, Stedox® Support wall braces are trusted and widely used across Finland, Sweden, Norway, Denmark, Germany, the UK, Ireland, the USA, Canada, and beyond.

### To use the wall brace, follow these steps:

1. Extend the brace to the desired length using its telescopic function in 100 mm increments.
2. Lock the brace in place using the locking pin.
3. Attach the brace to both the wall and floor securely.
4. Utilize the fine adjusting function by rotating the brace.

## Benefits – that Stedox® guarantee



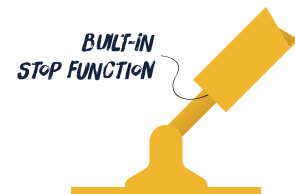
### Extra sturdy handle — full control with one hand

The ergonomic handle lets you install and adjust panels all day without hand fatigue, giving you complete control.



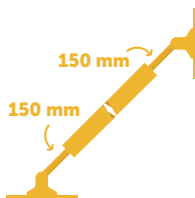
### Fast rough adjustment with locking pins

Quick and efficient rough alignment with locking pin(s) — one installer can easily handle the wall brace.



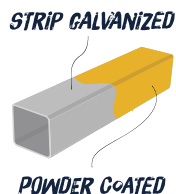
### Built-in stop function that prevents accidents

The integrated stop function on the threaded rods ensures they cannot be unscrewed by mistake.



### 300 mm fine adjustment that makes it easy to adjust the wall straight

After attaching the brace, adjust the length by rotating clockwise or counterclockwise — 5 mm per full turn for smooth, accurate alignment.



### Double rust protection ensures a long lifetime for the product

The tubes are strip galvanized and the entire brace is powder-coated for long-lasting durability, even in wet and harsh conditions.

7/13/18  
**kg**

### Sturdy, yet lightweight and easy-to-use makes the work more efficient

Weighing only 7 / 13 / 18 kg, the braces are easy to handle while maintaining maximum strength, improving installation efficiency.

### 3. General

This operating instruction contains important information on how Stedox® Support can be used safely. It is therefore crucial that the instructions are read prior to use of the wall brace. The operating instructions are always to be held at hand on the construction site. Stedox® products are intended to be used only by qualified professionals.

Stedox® reserves the right to make technical changes to the operating instructions. This ensures that work can be performed safely with current legislation, regulations and other safety guidelines. The responsible person must ensure that the building and its construction remain stable throughout the construction phase. This also includes the erection, dismantling, and handling of the wall braces. The building in its entirety is to be inspected after both erection and dismantling of the wall braces.

### 4. Safety and operating instructions

#### 4.1 Symbols

This symbol is used in conjunction with the instructions to place special attention to matters essential from a safety point of view:



Always obey the safety instructions to avoid personal injuries and property damage.

#### 4.2 Risk assessment

A risk assessment must always be carried out by the responsible person, covering the risks associated with the work to be performed. Always work in accordance with the instructions produced from the risk assessment.

#### 4.3 Installation instructions

The responsible person must ensure that all necessary documentation regarding the use of the wall braces is always available, regardless of how the wall brace is used or in which application. Appropriate documentation includes this operating instruction and suitable drawings and instructions for the job.



Always use at least two wall braces per element



The wall brace is to be attached above the center of gravity of the element! For tall elements where this is not possible, it is crucial to support them in other ways so the element cannot under any circumstance topple over.



The locking pin(s) must be in place before the wall brace is to be loaded! The wall brace may not be used without a locking pin!



Always attach the wall brace perpendicular to the supported element!

#### 4.4 Use

The wall braces are intended for professional use only. They may only be used by professionals under the supervision of qualified persons. The operating instructions are part of the wall brace and must always be followed.

Any addition, exception or deviation from these instructions (for example using other wall braces or methods) is a potential risk for which the responsible person remains solely accountable for any damages.

The use of other braces or procedures must always be planned appropriately. The responsible person is also accountable for all necessary supplementary planning and documentation.



Always ensure that permissible loads are not exceeded, and where and how the wall braces can be securely fastened.

#### 4.5 Information on the construction site

The responsible person must ensure that the operating instructions are always available on the construction site. Personnel are to be informed about the contents of the instructions and where they are stored, before using the wall braces.

#### 4.6 Illustrations

The operating instructions show parts of a construction under assembly and are therefore not complete from an occupational safety point of view. Always follow the given safety instructions even if they are not shown here.

#### 4.7 Checking the wall brace

Check the wall brace before each use. Stedox® Support may not be modified or changed in any way. A broken or damaged wall brace may not be used.

#### Checkpoints

- Permanent deformations, e.g.:
  - Stretched holes
  - Dents
  - The straightness of tubes and end brackets
- Condition of the threads
- Missing or loose parts
- Locking pin, undamaged and straight
- Tubes move without resistance
- Stop- and allowable loads decals

Contact customer service if you need support, spares or advice.

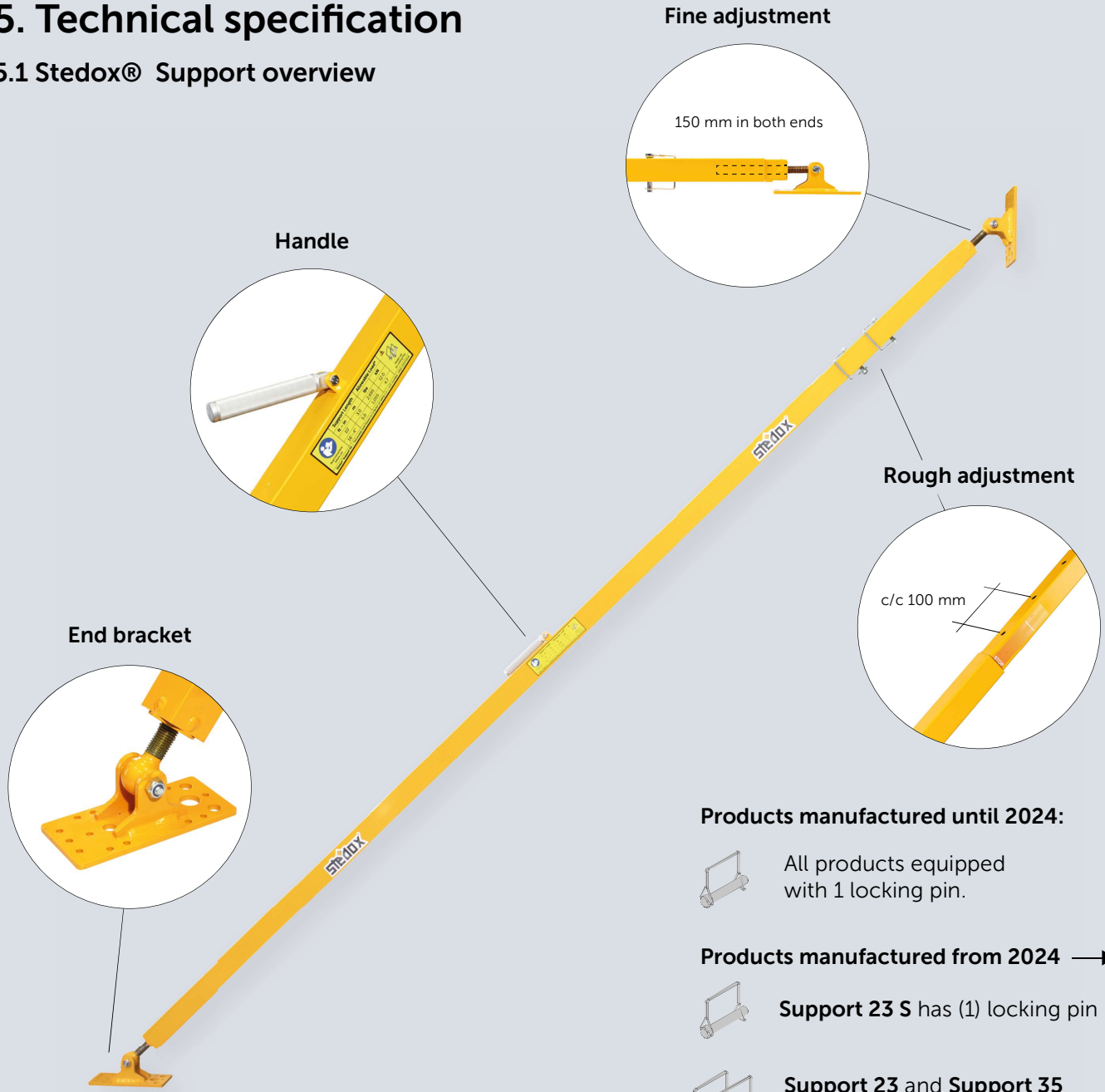
If the product is damaged or broken, stop using it immediately. Repair, replace or dispose of it immediately before resuming work.

#### 4.8 Use of other products

The use of other manufacturer's products is always associated with a certain risk. The risk assessment is to evaluate each case individually. The situation may require several and/or separate instructions to be compiled.

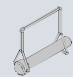
# 5. Technical specification

## 5.1 Stedox® Support overview

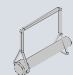


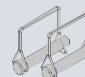
Detailed end bracket specifications on page 8

### Products manufactured until 2024:

 All products equipped with 1 locking pin.

### Products manufactured from 2024 →

 **Support 23 S** has (1) locking pin

 **Support 23** and **Support 35** have (2) locking pins

	Stedox® Support 23 S	Stedox® Support 23	Stedox® Support 35
Minimum length (mm) <sup>1)</sup>	1770	1950	2850
Maximum length (mm) <sup>1)</sup>	3100	3380 <sup>2)</sup>	4970
Rough adjustment (mm)	c/c 100	c/c 100	c/c 100
Fine adjustment (mm)	328	328	328
Weight (kg)	7,2	13,2	18
Rust protection	Continuous strip galvanization + powder coating		

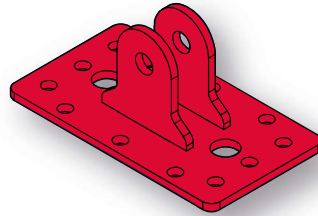
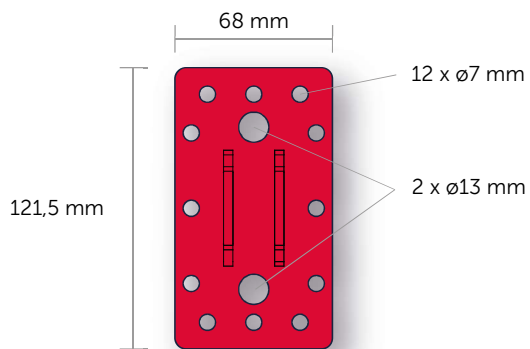
1) Older versions (until Q2 2025) of Stedox® Support 23 can extend up to approximately 3184 mm.

2) Minimum and maximum lengths are rounded values measured from the absolute longest point, with both end brackets rotated 90° perpendicular to the wall brace.

## 5.2 End bracket geometry

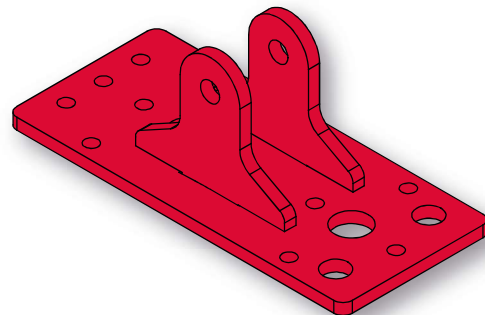
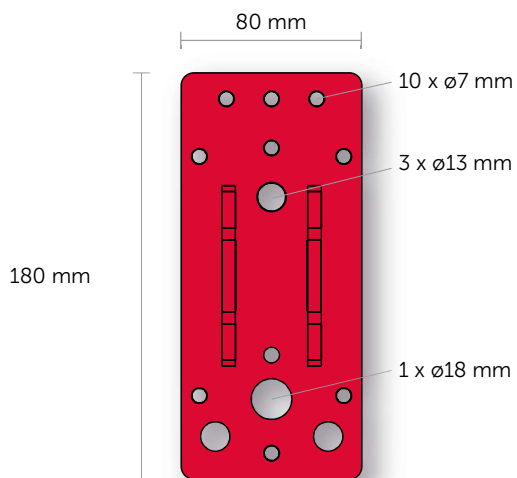
### Stedox® Support 23 S:

Plate thickness	4 mm
-----------------	------



### Stedox® Support 23 and Support 35 (Peri configuration)

Plate thickness	6 mm
-----------------	------



# 6. Structural values

## 6.1 Load tables and charts

Load tables and charts are based on theoretical calculations according to Eurocode 3 standards, as well as verified tests performed in certified construction laboratories.

### Exceeding the maximum permissible load

Exceeding the specified load capacity may cause locking pin hole deformation or brace buckling, which can result in serious injury or death.

Before use:

- All loads to be supported by the wall braces must be calculated by a qualified engineer.
- Each load value should be verified and double-checked prior to installation.



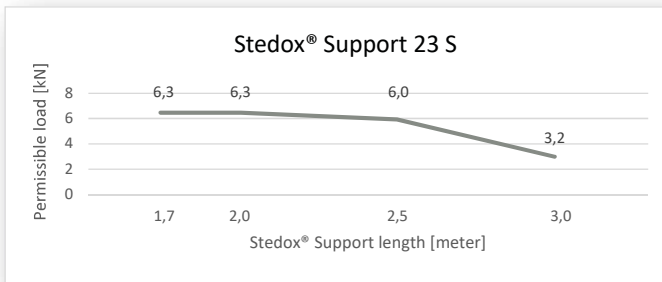
Under no circumstances, the maximum permissible load should be exceeded!

### Stedox® Support 23 S:

Stedox® Support 23 S | 1,7 - 3,0 m | 7,2 kg

Stedox® Support length [meter]	1,7	2,0	2,5	3,0
Permissible load* [kN]	6,3	6,3	6,0	3,2

1) Permissible loads include a safety factor of 1,5



Products manufactured until 2024 have 1 locking pin only.

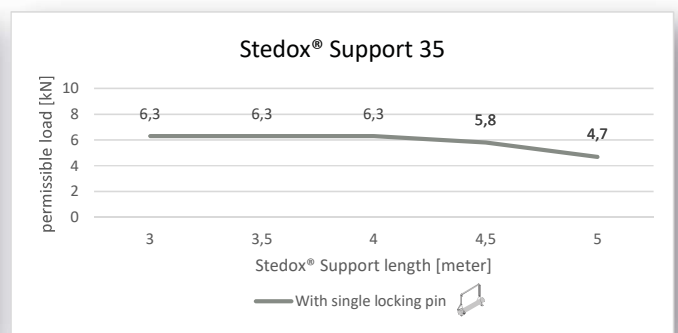
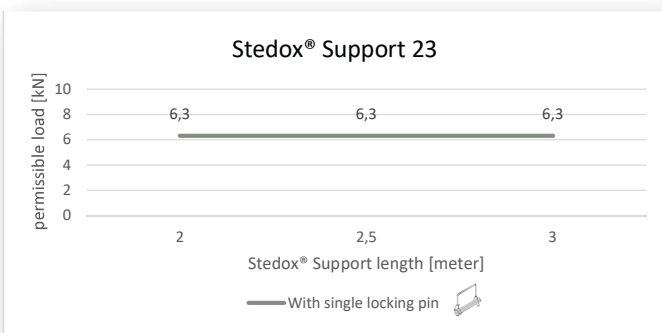
### Stedox® Support 23 and 35 | With single locking pin

Stedox® Support 23 | 2 - 3 m | 13,2 kg

Stedox® Support 35 | 3 - 5 m | 18 kg

Stedox® Support length [meter]	2	2,5	3	3,5	4	4,5	5
Permissible load* with single locking pin [kN]	6,3	6,3	6,3	6,3	6,3	5,8	4,7

1) Permissible loads include a safety factor of 1,5



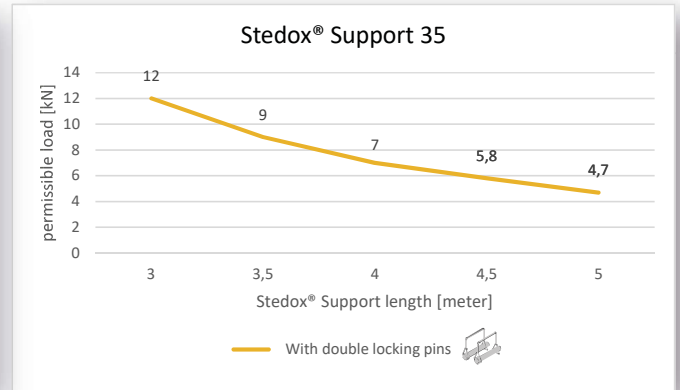
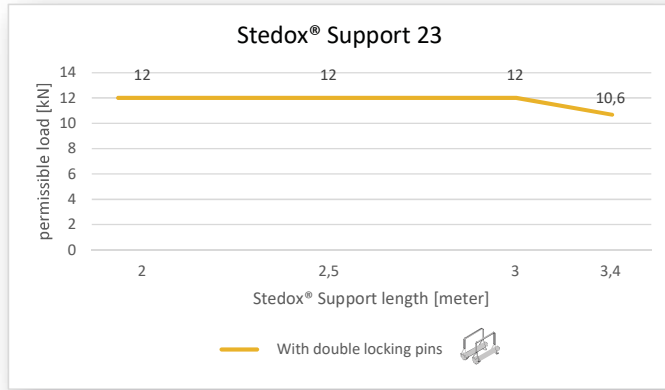
**Stedox® Support 23 and 35 | With double locking pins ⚠**

Stedox® Support 35 | 3 - 5 m | 18 kg

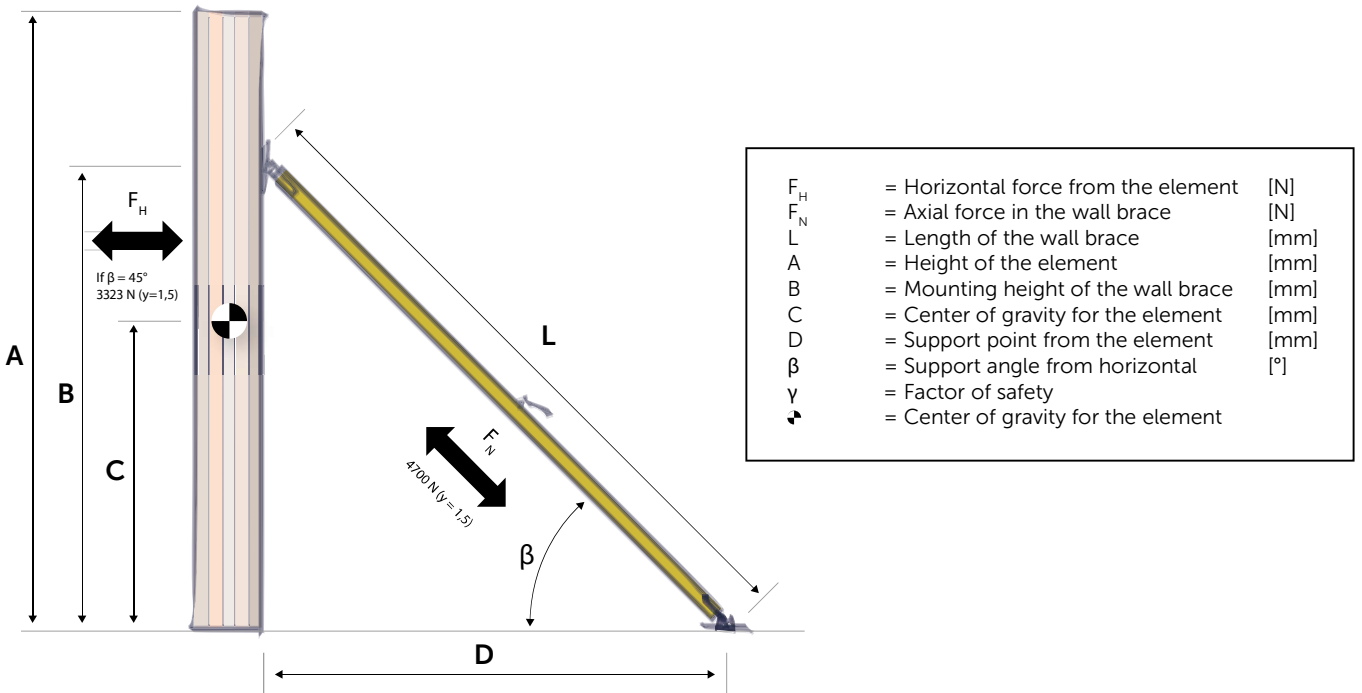
Stedox® Support 23 | 2 - 3,4 m | 13,2 kg

Stedox® Support length [meter]	2	2,5	3	3,4	3,5	4	4,5	5
Permissible load* with double locking pins [kN]	12,0	12,0	12,0	10,6	9,0	7,0	5,8	4,7

1) Permissible loads include a safety factor of 1,5



**6.2 Example: Load and force calculation — Stedox® Support 35 at 5 meters**



NOTE! The force  $F_N$  can be tensile or compressive.

Angle $\beta$ [°]	$\cos(\beta)$	With safety factor, $\gamma = 1,5$	
		Supporting force $F_H$ [N]	Axial force in the wall brace at 5 meters $F_N$ [N]
30	0,866	4070	4700
35	0,819	3849	
40	0,766	3600	
45	0,707	3323	
50	0,643	3022	
55	0,574	2698	
60	0,5	2350	

The wall brace angle  $\beta$  from horizontal, must be:

$$30^\circ \leq \beta \leq 60^\circ$$

The wall brace fastening height B must be higher than the center of gravity C.

$$B \geq C$$

Recommended that the center of gravity C is at most 2/3 of the fastening height B:

$$B \geq 1,5C$$

The axial load of the wall brace is always to be less than the maximum permissible force including safety factor:

$$F_N \leq \pm 4700 \text{ N}$$

If the element is homogeneous the height of its center of gravity can be calculated:

$$C = A / 2$$

The angle from horizontal of the wall brace can be calculated from:

$$\beta = \arctan (B / D)$$

The maximum permissible load in horizontal direction is:

$$F_H = F_N \cdot \cos(\beta)$$



It is the responsibility of a qualified engineer to verify all loads and confirm that the wall brace is securely fastened for the intended application.

## 7. Note

When the threads at both ends bottom out, extend the wall brace by moving the locking pin to the next hole. Before use, ensure the threads are equally extended on both ends to reach maximum length without causing damage. Each thread can be extended up to ~150 mm.



Never remove the locking pin(s) unless the element is properly supported by a crane or another suitable support method.

## 8. Service and spare parts

Only original Stedox® spare parts may be used, and maintenance must be performed by qualified personnel. Compatible parts are listed on the Stedox® website.

Keep the wall brace in good condition by washing and lubricating the threads if dirty, rusty, or exposed to moisture. Lubricate and fully thread them through at least twice per year. Always inspect the product as described in Chapter 4.7.



Only use original spare parts!

## 9. Handling

To minimize weight, the wall thickness in the product is thin. It can therefore be dented if handled carelessly.



A broken or damaged product must be replaced or repaired immediately.

## 10. Storage

Maximum longevity is achieved by storing the product clean and protected from moisture. If the wall brace is subjected to moisture it is reasonable to store it standing so moisture can be drained.

During prolonged storage the product is to be protected from corrosion.

## 11. In case of an accident

In the event of an accident when using Stedox® Support, do the following in this order:

- Prevent personal injuries
- Prevent property damage
- Inform the person in charge on site

# 4 REASONS TO CHOOSE STEDOX®

- + Built-in stop function for extra safety
- + Up to 50% more efficient installations
- + Double rust protection ensures a long lifetime for the wall braces
- + Products developed by installation experts



## Contact information to Stedox® rental partner in the Nordics:

**PERI Sverige AB**  
Sadelvägen 19  
302 62 Halmstad  
Sweden  
[www.peri.se](http://www.peri.se)

**PERI Danmark**  
Greve Main 26  
2670 Greve  
Denmark  
[www.peri.dk](http://www.peri.dk)

**PERI Norge**  
Orhusveien 6  
3070 Sande i Vestfold  
Norway  
[www.peri.no](http://www.peri.no)

**PERI Suomi Ltd Oy**  
Hakakalliontie 5  
05460 Hyvinkää  
Finland  
[www.peri.fi](http://www.peri.fi)



## Have questions about Stedox® wall braces?

→ Contact Stedox® Product Developer, Dennis, and he'll be happy to help you!

**DENNIS SUNDSTRÖM** | Co-Founder & Product Developer

[dennis@stedox.com](mailto:dennis@stedox.com)  
+358 44 206 3020



Stedox Ab Oy | VAT No. FI30062237  
Industrivägen 6  
68660 Jakobstad, Finland